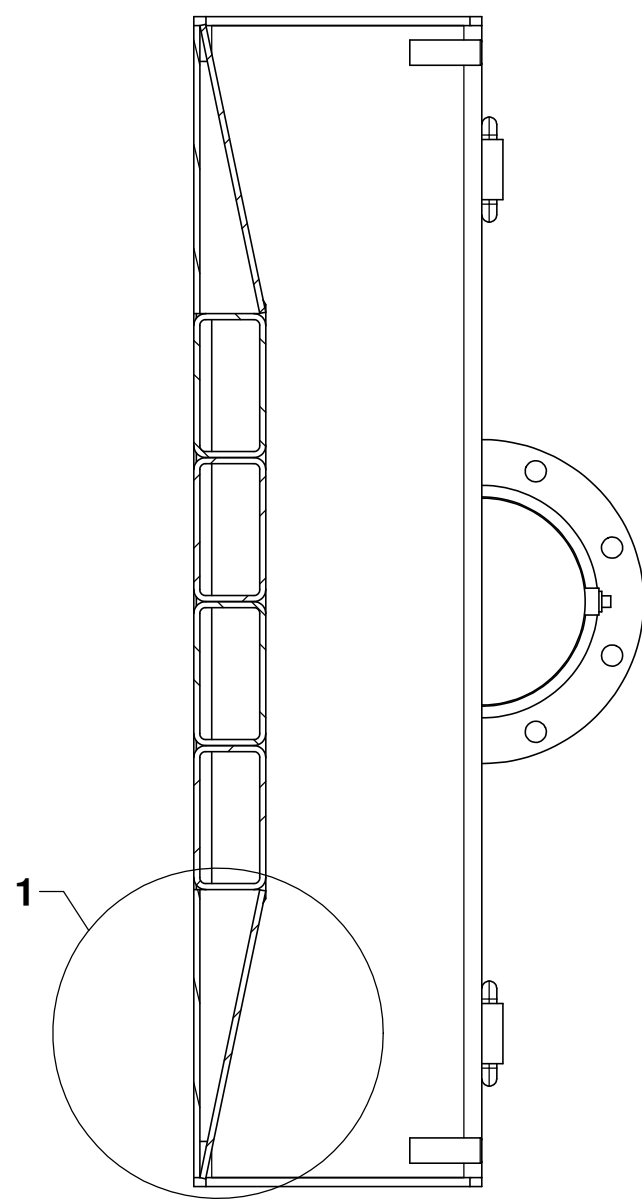
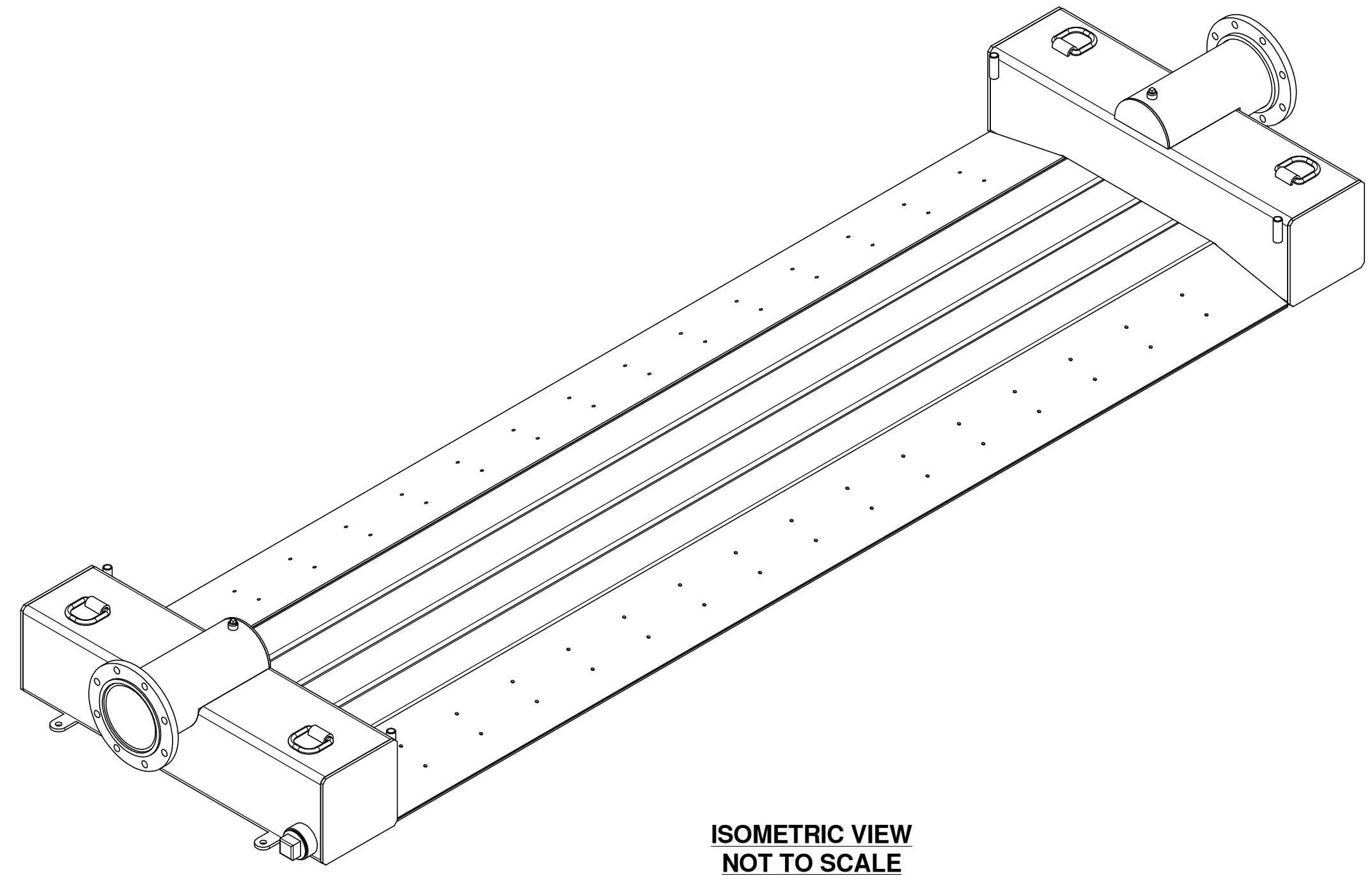
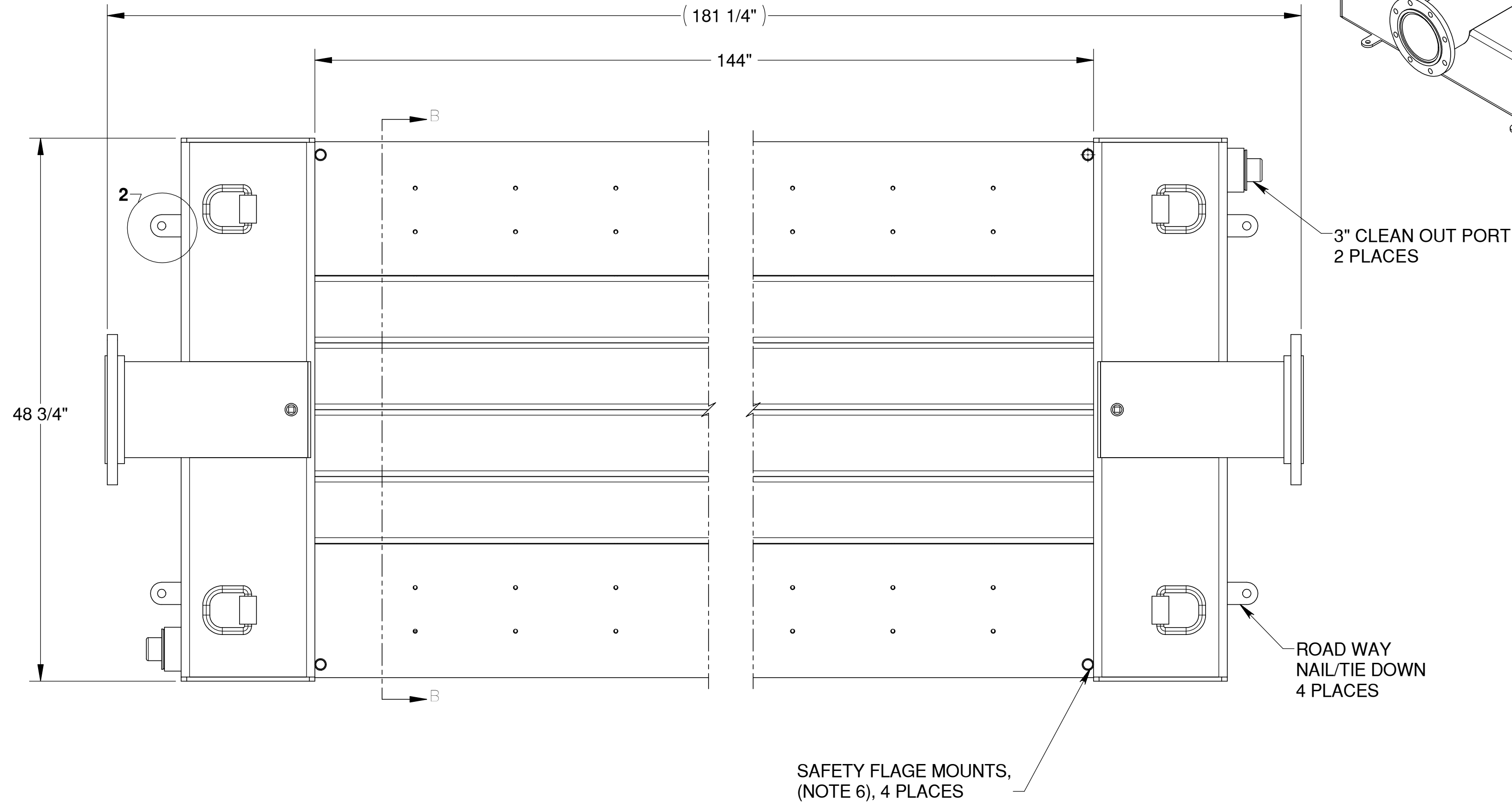


DETAIL 2
SCALE 1 : 4
4 PLACES



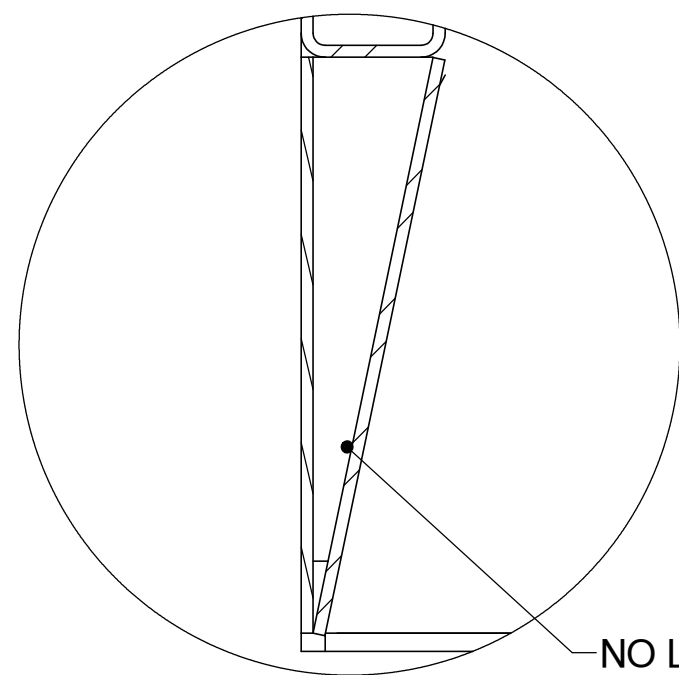
SECTION B-B



ISOMETRIC VIEW
NOT TO SCALE

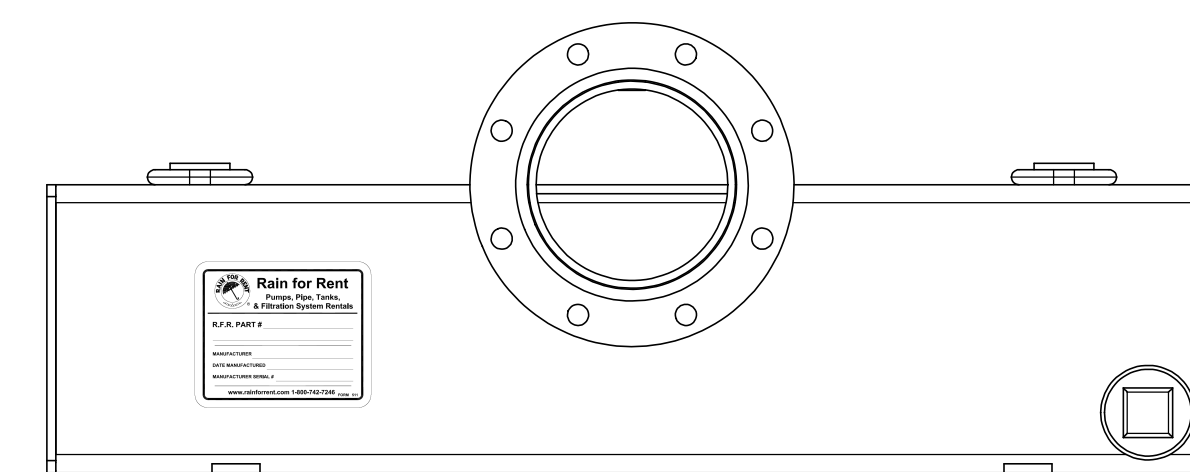
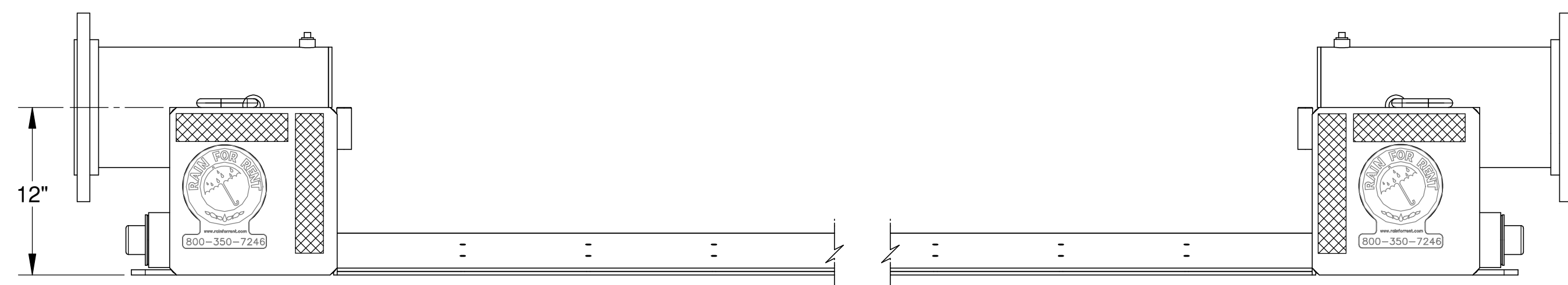
NOTE:

1. GALVANIZED IN ACCORDANCE WITH ASTM A 384 & A 385 STANDARDS.
2. ADD WHITE OR ORANGE D.O.T. REFLECTOR TAPE AS INDICATED ON SQUARE TUBING. (GRAINGER PART # - WHITE 1F017 - ORANGE 1F019)
3. PLACE A 6" RAIN FOR RENT LOGO STICKER WITH 1-800 NUMBER, FORM #437, AS INDICATED. (ORDER R.F.R. 1-800 DECAL FROM RAIN FOR RENT.)
4. PRESSURE TEST BEFORE AND AFTER GALVANIZING WITH WATER AT 112 PSI FOR MINIMUM OF 5 MINUTES TO CHECK FOR LEAKS.
5. WORKING PRESSURE 75-PSI MAX.
6. MOUNTING POINTS FOR STANDARD SAFETY WARNING FLAGS, (GRAINGER ITEM #4A415, 18" X 18" RED/ORANGE WITH 3/4" DIAMETER DOWEL OR EQUIVALENT), (SUPPLY WITH ROAD CROSSING)
7. APPROXIMATE WEIGHT - _____ LBS. EMPTY.
8. MAINTAIN FLANGE SURFACE..
9. USE DECAL (FORM #511) TO STAMP ASSEMBLY WITH MANUFACTURE NAME AND DATE ASSEMBLY WAS MANUFACTURED.
10. CONTACT RAIN FOR RENT ENGINEERING DEPARTMENT FOR APPROVAL BEFORE ANY CHANGE IN DESIGN.



DETAIL 1
SCALE 1 : 4

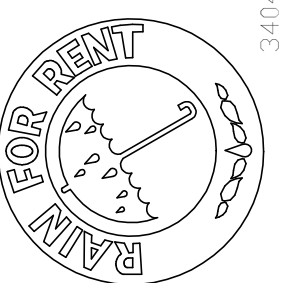
NO LIQUID
PASSES THROUGH
ANGLED PART



**8" X 12' ROAD CROSSING
W/ EXTENDED ANGLES**

SALES / REFERENCE DRAWING

**Rain For Rent
Engineering**



3404 State Road PO Box 2248 Bakersfield CA 93303

ALL INFORMATION CONTAINED IN OR DISCLOSED BY THIS DOCUMENT IS CONSIDERED CONFIDENTIAL AND PROPRIETARY BY RAIN FOR RENT. ALL DISCLOSURES BY PERSON INFORMATION AND REPRODUCTION OF THIS DOCUMENT AND ALL SALES RIGHTS ARE EXCLUSIVELY RESERVED BY AND TO RAIN FOR RENT AND COMMUNICATION OF THIS INFORMATION TO OTHERS IS PROHIBITED WITHOUT THE PRIOR WRITTEN CONSENT OF RAIN FOR RENT.

DATE	SCALE
12/11/2003	1:8
DESIGNED BY	
K.KROSS	
CHECKED BY	
K.KROSS	
APPROVED BY	
M.STEVENSON	
JOB NUMBER	
1021213	
DRAWING NUMBER	
103509~1_1	
SHEET	REVISED
1 of 1	D 2

2	ADDED NOTES AND CHANGED 1/4"X12X12 PLATE TO 3/8"X12X12 PLATE	103509~1_1	MS	3/24/2004
1	CHANGED 1/4" WALL, 12X12 SQ. TUBE TO 3/8" WALL	103509~1_1	MS	3/23/2004
REV.NO.	DESCRIPTION	PREV.DWG	BY	DATE